



**Matthew Barber**

Police & Crime Commissioner  
for Thames Valley

## **MULTI AGENCY SAFEGUARDING HUBS**

### **Report to Police & Crime Panel**

### **18<sup>th</sup> November 2022**

#### **Purpose of the Report**

1. To provide the Panel with an update on Multi Agency Safeguarding Hubs.

#### **Background**

2. A MASH is a mixed team of Police staff, health workers and local authority social workers who focus on swiftly gathering and reviewing information about children at risk of harm. They are co-located and this helps to share information and expertise so that action can be taken effectively and in line with all the information which is known. This multi-agency work improves the understanding about the risks children and household may face. They were introduced to address the long standing deficiencies in the way organisations use and share information to protect and safeguard children.
3. The police staff within MASH review safeguarding concerns about vulnerable adults at risk. They also review and share information about reports of domestic abuse and mental health concerns which have been tasked to them by officers.
4. There are 9 MASH's within Thames Valley and they generally work between 8am and 4pm except on Friday (to 3:30pm).
5. A process and policy review was undertaken in May 2020 which reviewed 13 functions and made 17 recommendations.
6. The following presentation sets out the new vision statement for the Multi Agency Safeguarding Hubs including the benefits that are being seen from the use of Robotic Process Automation.



# Multi Agency Safeguarding Hubs 2022-24

## Mission Statement

The Multi Agency Safeguarding Hub (MASH) will facilitate timely, high quality information sharing, analysis and decision-making between key professionals, to deliver appropriate intervention for children and adults at risk of harm

## Vision Statement

In order to maintain a high-level of service delivery across our statutory responsibilities to protect vulnerable individuals and withstand an ever-increasing demand, MASH will maximise the efficiency of our existing resources through bespoke training delivery and technological advancements.

Ten priority areas for improvement will prepare MASH for post COVID-19 changes to Policing and the increased workload generated through improved public confidence in reporting and early recognition of abuse and neglect indicators by our workforce

# Vision Statement

**MASH staff will have the necessary training and skills for their roles**

NVAP 2.6.1

**MASH Operational Guidance will be current and relevant**

MASH 2020 P&P review

**'Voice of the child' or adult at risk will inform every threshold decision**

NCPI thematic report. SIIRT 2020 Compendium of Learning. NVAP 2.4.1

**17x 2020 Recommendations will be embedded**

MASH 2020 P&P review

**MASH resolution process 2022 will professionally challenge referral outcomes**

NVAP 2.2.1. VKPP. SIIRT 2020 Compendium of Learning. MSt Cambridge research

**Intel sharing arrangement will be fit for purpose**

CSPR 2019. SIIRT 2020 Compendium of Learning

**MASH operating hours will reflect demand**

MASH 2020 P&P review

**100% TVP participation at ICPCs**

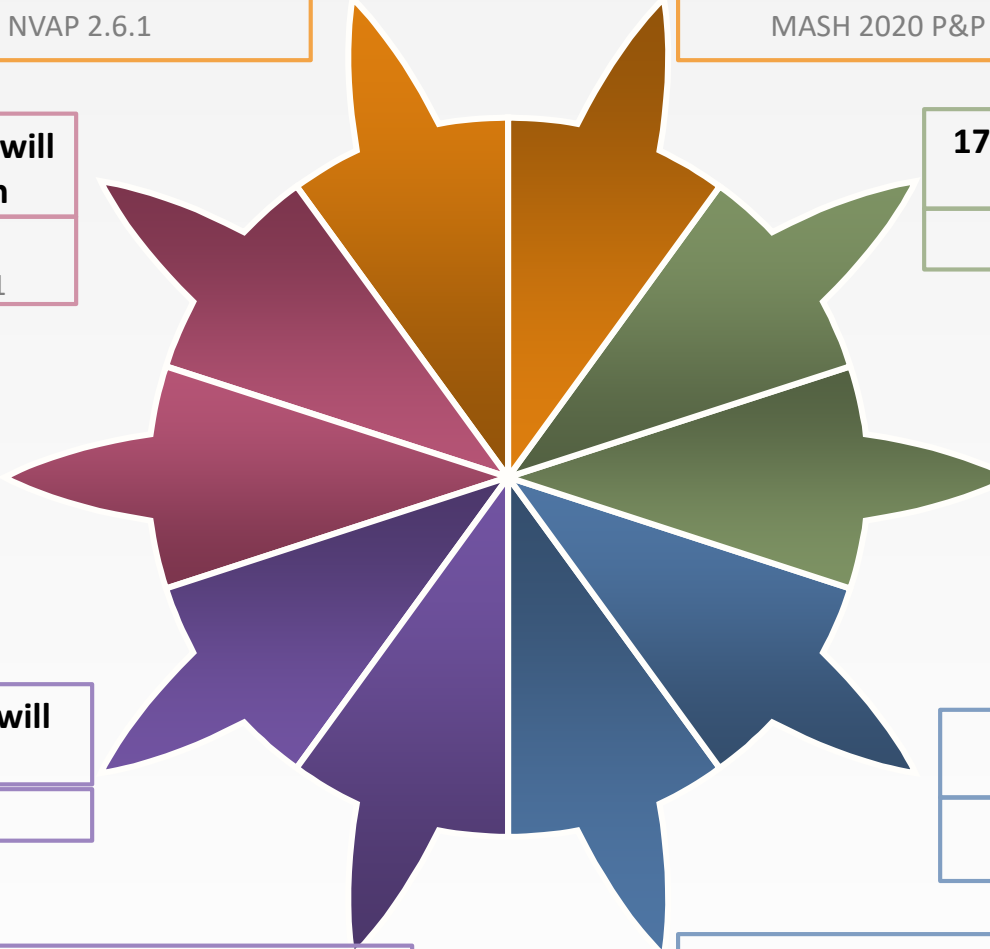
Bullfinch IMR 2014. MASH 2020 P&P review

**MASH demand profile 2020-26 will inform future establishment**

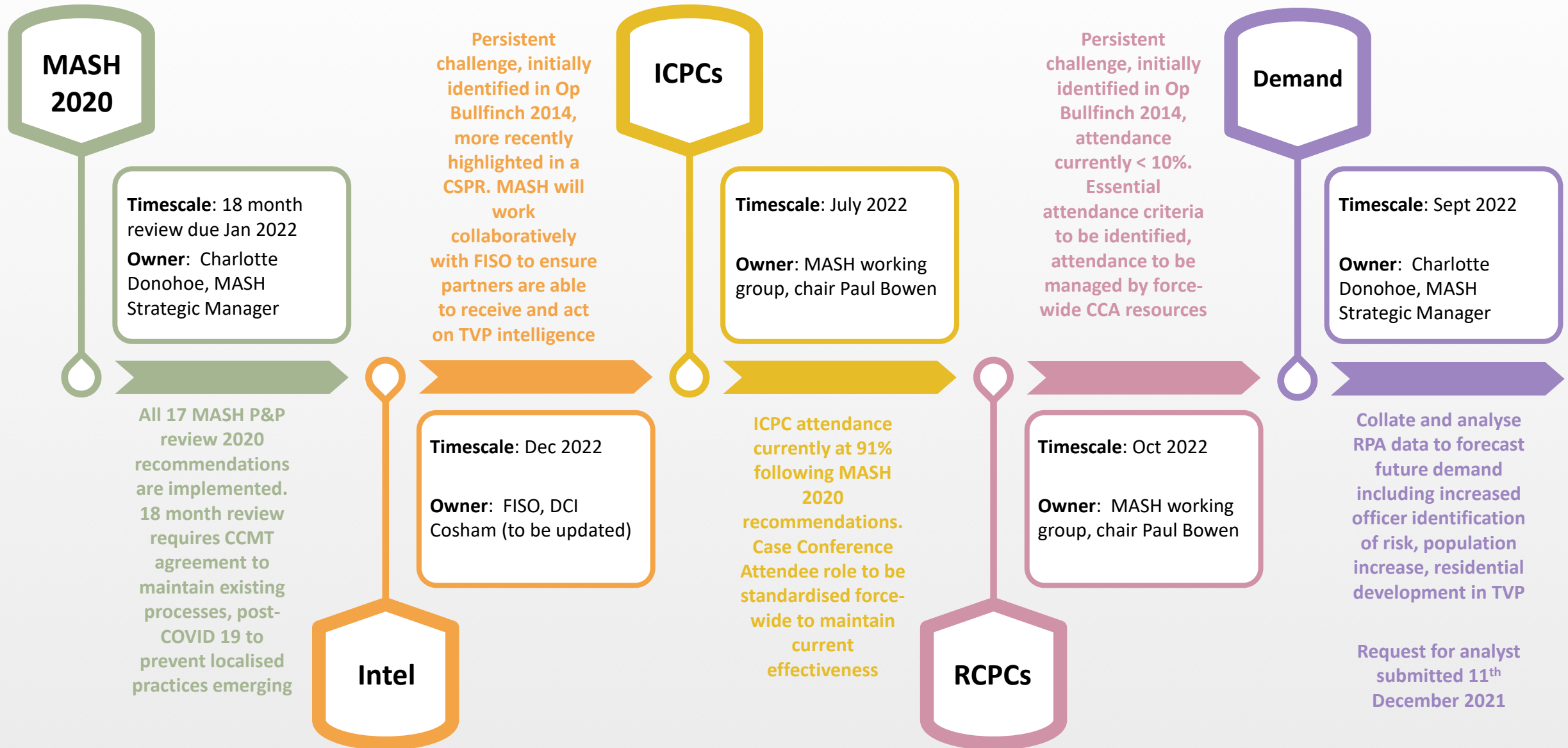
. MASH 2020 P&P review. Force Management Statements

**100% TVP participation at relevant RCPCs**

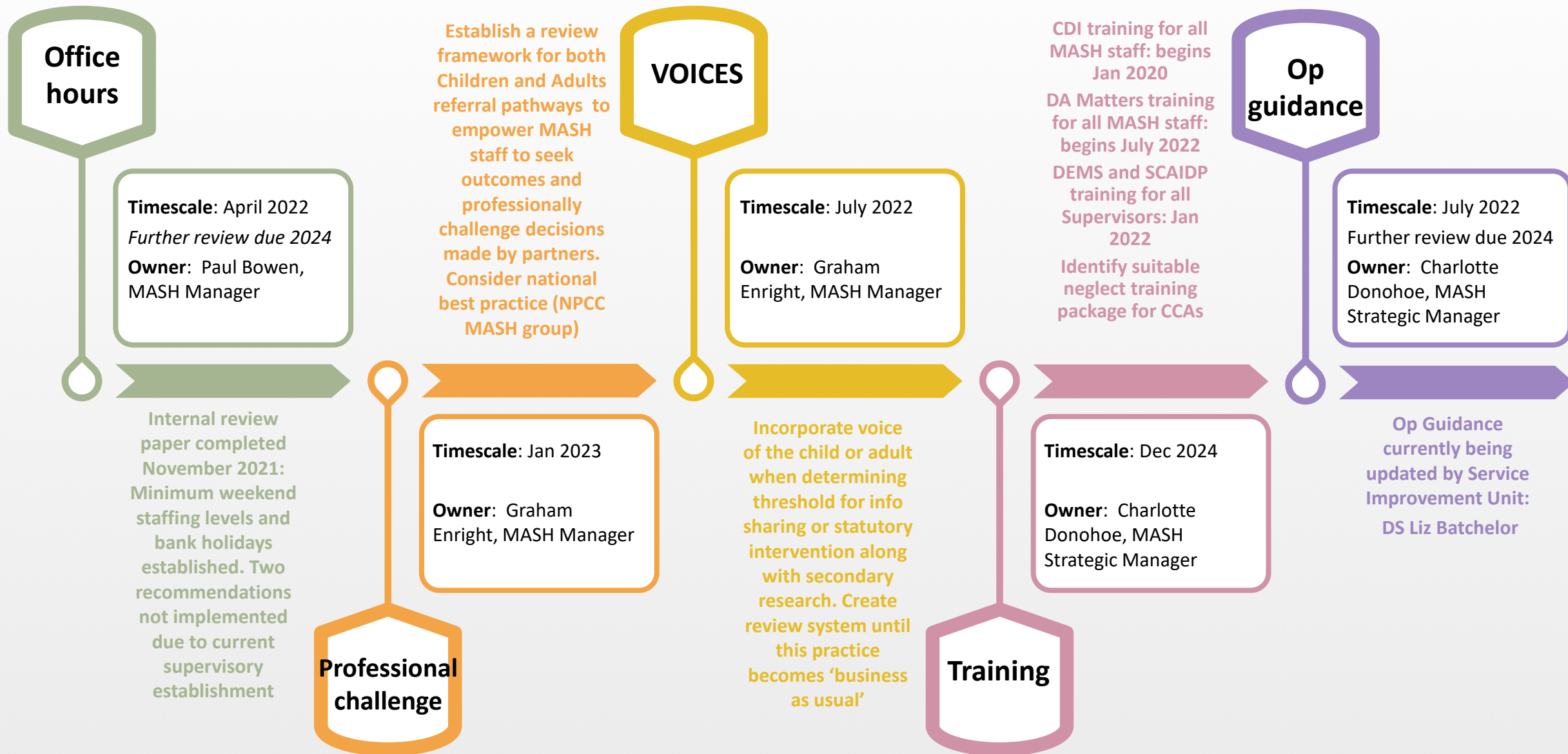
Bullfinch IMR 2014. MASH 2020 P&P review



# Timescales 1



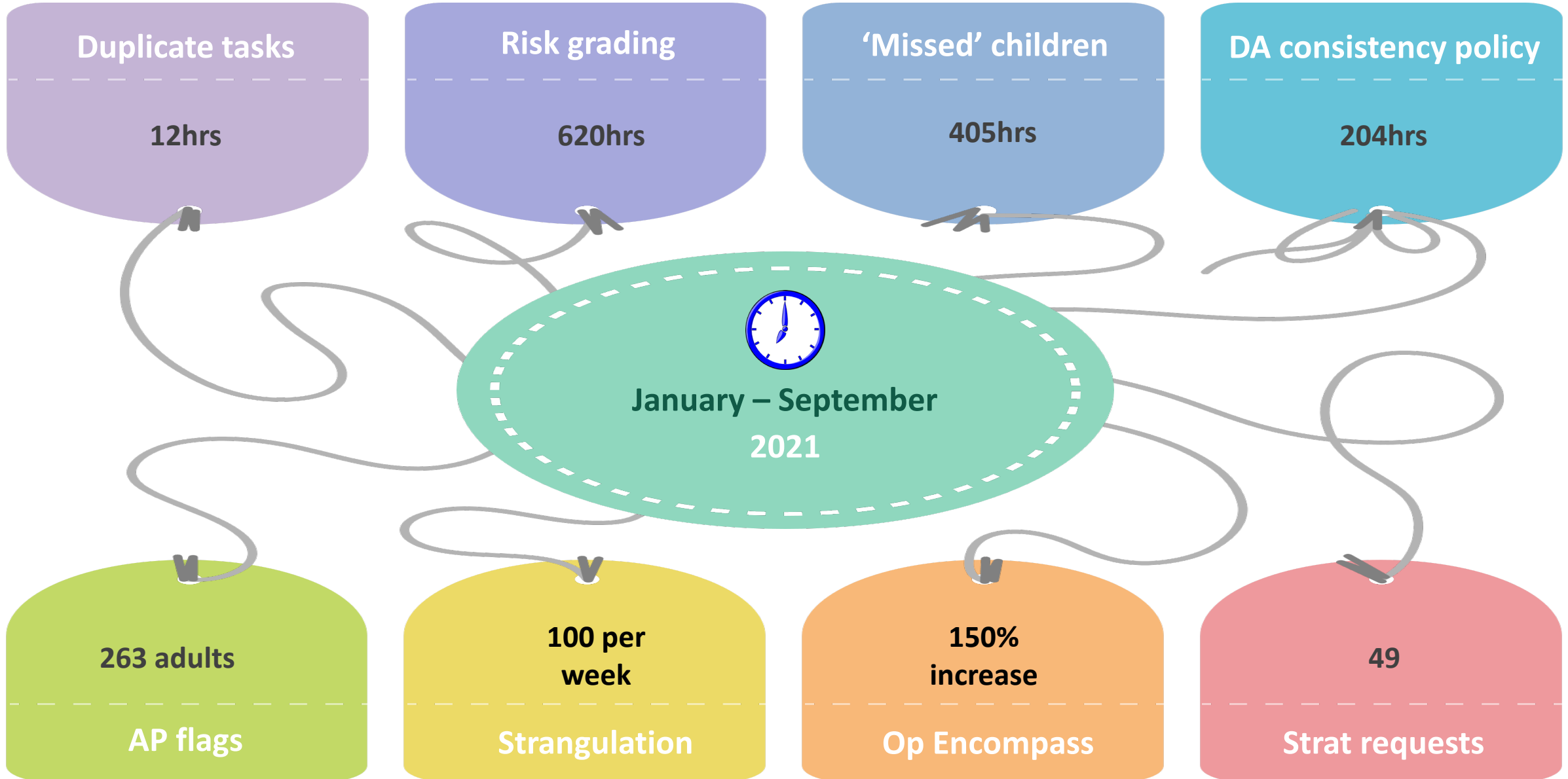
# Timescales 2





MASH

# Robotic Process Automation





# Operation Encompass 2021

